



put it in the right bin



## Recycling

### What is recycling?

Most of the things we use or consume come in plastic, metal, glass or cardboard packaging, and then there is the paper that we read, write and draw on. Recycling is the process of turning something we have already used into a new product. It is an excellent way to help care for our environment and make the most of our precious resources.



### What can be recycled?

STUFF that can be recycled is put in your kerbside recycling bin and includes:

- Paper and cardboard - egg cartons, biscuit boxes, toilet rolls, newspapers, magazines, all clean paper.

TIP - If you have small pieces of paper like shopping docketts or shredded paper, put them inside an envelope, paper bag or box to contain them and then they can be collected and recycled.

- Drink and food cartons - milk cartons, juice cartons, soup cartons.

TIP - Make sure they are empty and clean.

- Metal cans and tins - food and drink cans, aerosol cans and even empty paint tins.

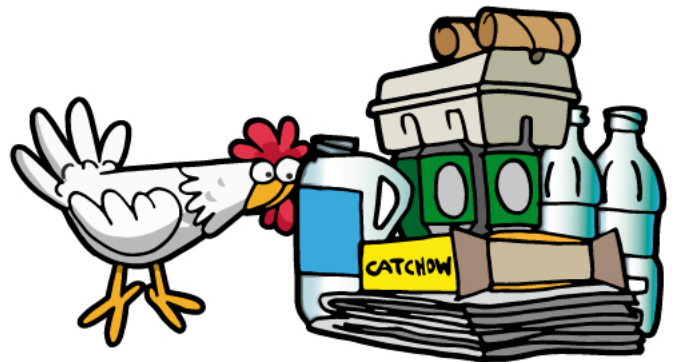
TIP - All metal is valuable and metal lids can be collected for recycling by putting them inside an empty tin and squeezing the top closed so that they will stay inside the can.

- Plastic containers - all drink bottles and food tubs, shampoo bottles, cleaning, laundry and detergent bottles, most plastic containers.

TIP - 'Squeeze' the plastic container to see if it holds its shape; soft plastic will scrunch and foam trays will break so these do not belong in recycling.

- Glass jars and bottles - all clear and coloured glass jars and bottles can be recycled.

TIP - Give them a rinse to remove any food stuck to the sides.



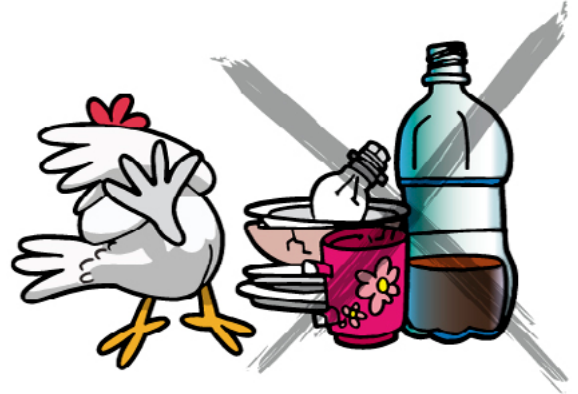


put it in the right bin



Some STUFF does not belong in your recycling bin for very good reasons, and they are called 'contaminants'. They include:

- Containers with food or drink still in them. They can contaminate and make a mess of a whole load of recycling. Imagine smelly, 'off' milk splashed through the paper in your bin! The paper recyclers will reject it and it will be sent to landfill instead.
- Cups, plates, drinking glasses, Pyrex and light globes do not belong in the recycling bin. They will mix with the glass bottles and jars and can't be recycled in the same way because they are made from different materials.
- Clothing, rope, and video tape are not collected for recycling because they can wrap around the machines that help sort the different materials causing the machinery to break down.
- Materials placed in bags are a contaminant. The people sorting the recycling will not open them because they might contain something hazardous like nappies or medical waste.



## What happens to the STUFF from my recycling bin?

When the contents of your recycling bin are collected from your kerbside, they are taken to a Materials Recovery Facility (MRF) and tipped for sorting.

At the MRF, the recycling is sorted into different materials (paper and cardboard, steel, aluminium, different plastics, and different coloured glass) by machines and by people. Most of the paper and card is separated from the other recycling by machinery and the rest is picked up and sorted by people as it travels along a conveyor belt. Once sorted, the different materials are pressed into bales (large cube shaped blocks) and taken away to be recycled into new products.

